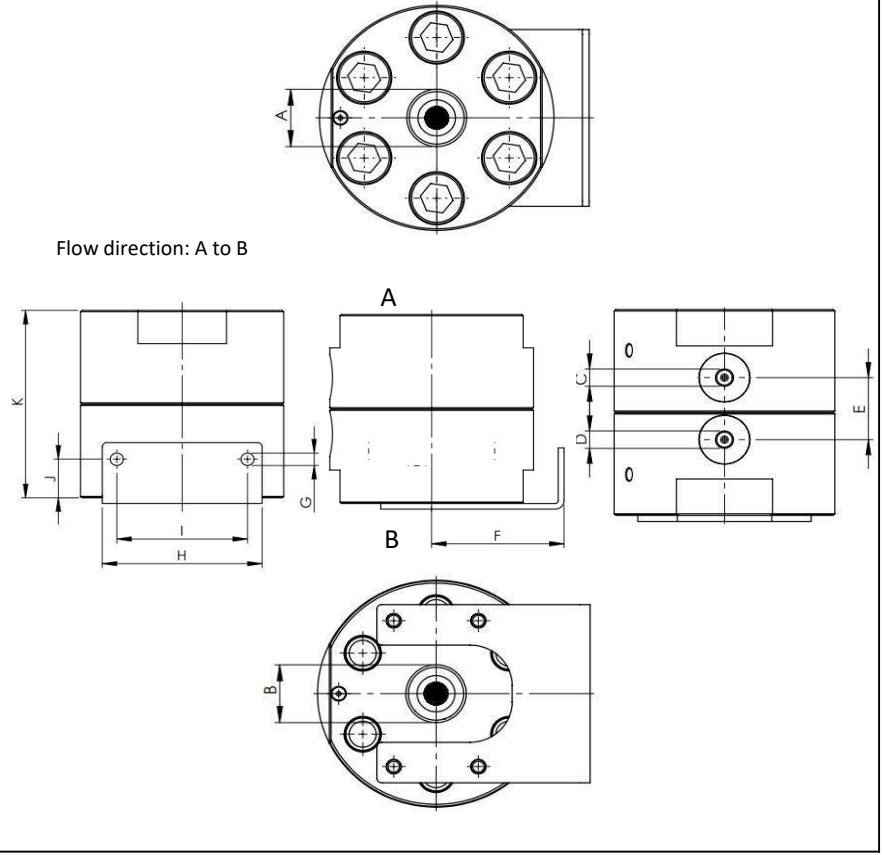


# Sample-test filter for hydrogen 9041

Operating pressure:	1050 bar/15.200 psi
Temperature:	-40°C to +85°C
Material body:	AISI316
Connections:	Cone and Thread (c/t)
Tests:	EN10266-1 P10, 1650 bar water
Compliance:	PED (2014/68/EU)
	ASME B31.3
Filter:	Dia. 47 mm sheet disc.



Catalogue number	A ["c/t]	B ["c/t]	C ["c/t]	D ["c/t]	E [mm]	F [mm]	G [mm]	H [mm]	I [mm]	J [mm]	K [mm]
9041 1/4	1/4	1/4	1/4	1/4	41	91	9	110	90	28	136
9041 3/8	3/8	3/8	1/4	1/4	41	91	9	110	90	28	136
9041 9/16	9/16	9/16	1/4	1/4	41	91	9	110	90	28	136
9041 3/4	3/4	3/4	1/4	1/4	41	91	9	110	90	28	136
9041 1	1	1	1/4	1/4	41	91	9	110	90	28	136

Revision 0

Datasheet subject to change without notice

