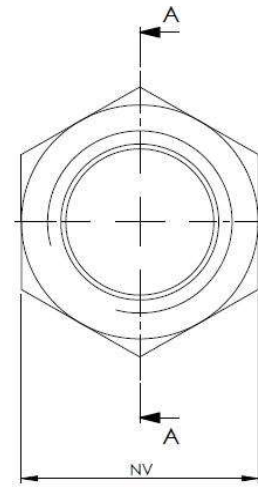
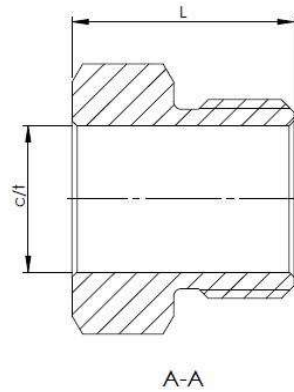


Gland (9061)

Operating pressure:	1.500 bar
Temperature:	-60°C to +200°C
Material body:	AISI316L
Connections:	Cone and thread



Catalogue number	c/t ["]	NV [mm]	L [mm]
9061 1/4	1/4	14	15
9061 3/8	3/8	17	18,5
9061 9/16	9/16	24	22,5
9061 3/4	3/4	30	29
9061 1	1	36	35

Datasheet subject to change without notice

Revision 0